

The Awesomely Amazing Science club

WHIZZ POP BANG!

DRINK TRICK

What you do:

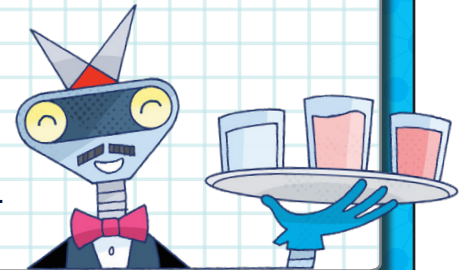
You will need:

- Three glasses
- Icing sugar
- A teaspoon
- Red food colouring

1. Add one teaspoon of icing sugar and a splash of warm water to each glass. Stir until the sugar has dissolved, then fill the glasses up with cold water.
2. Add about two drops of food colouring to one glass and half a teaspoon of food colouring to another glass. Leave one glass clear. Stir them well.
3. Ask a volunteer to sip each drink and tell you which one they think is the sweetest.

You should find:

The volunteer will probably think that the strongest-coloured drink is the sweetest as we associate bright colours with sweet flavours, like fruit. Now ask them if they can guess the flavour of the strongest-coloured drink. They might suggest strawberry, or another red fruit, because of the colour (even though you know it has no flavour at all!). If they're not fooled, perhaps you have a super-taster on your hands!



JELLY ENGINEERING



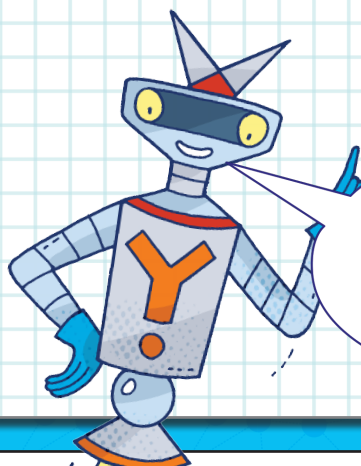
Did you know that it's really hard to engineer a jelly more than 10 cm tall that can stand up on its own?!

What you do:

1. Use normal jelly (as many packets as you like), made using the volume of water shown on the pack.
2. Anything you add to strengthen your structure must also be edible!
3. Once you have set your jelly in a fridge, turn it out of the container and see if you can build a structure taller than 10 cm.

You will need:

- Packets of jelly
- Edible items to strengthen your structure, such as pasta and rice
- Containers to set the jelly in



Take a photo of your engineered jelly next to ruler and email it to schools@whizzpopbang.com

